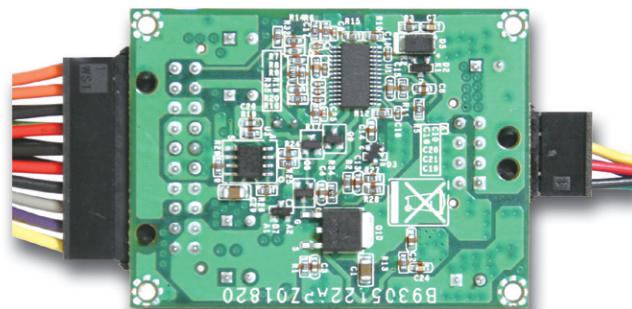
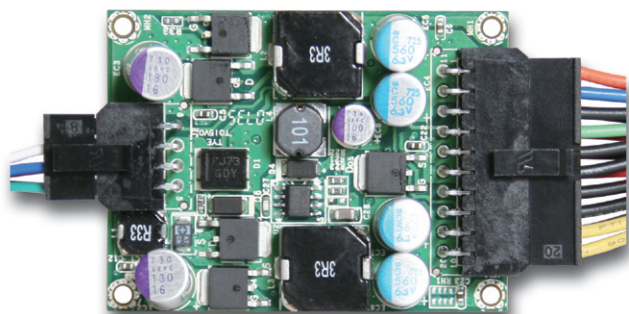


GADIWA-P0901

90W DC/DC Converter (12V/input, ATX/output), Board Type



FEATURES

- 12V DC/input, plug into the ATX connector with board output
- Compact and user-friendly design for installation and maintenance
- Fan-less design for mission-critical application
- Small size for 1U or higher system to save space

SPECIFICATION

Input Voltage	12V (+5%/-4%)
Line Regulation	11.52V / 12.6V
Max Output	90Watts
Efficiency	>96% @ 12.3V
Input Connector	Mini-Fit 8 pin (P/N: B6902040)
Output Connector	Mini-Fit 20 pin (P/N: B6902071)
Dimension (WxDxH)	60 x 45 x 15.5 mm

CHARACTERISTICS

Output Voltage	Load Regulation	Cross Regulation
+12V	0~7A	6.5A
+5V	0~6A	4A
+3.3V	0~6A	6A
+5Vsb	0~2A	1A
-12V	0~0.1A	0.1A

ORDERING GUIDE

- GADIWA-P0901
90W DC/DC Converter (12V/input, ATX/output), Board Type

Installation Image

