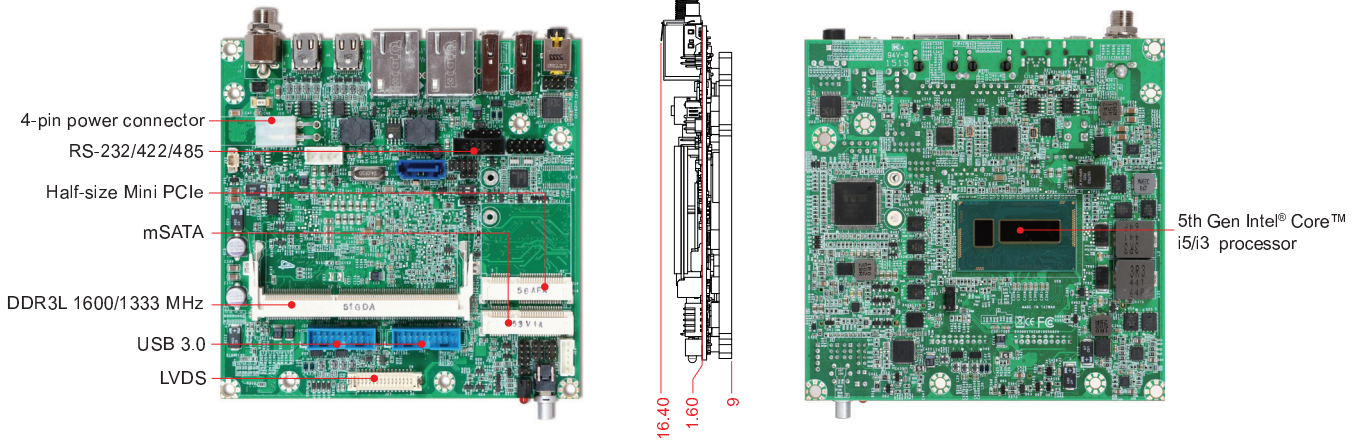


NANO-6050

5th Gen Intel® Core™ i5/i3 Processors Based Nano-ITX Board with Triple Display, DDR3L SO-DIMM, Dual GbE, USB 3.0, SATA III, and mSATA

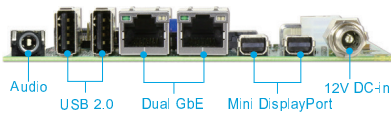


NANO-6050 is built with 5th Gen Intel® Core™ i5/i3 processors. It delivers greater performance while remaining a compact footprint. In order to minimize footprint, Portwell adapts mSATA solid-state drive (SSD) to fulfill various industrial requirements.

FEATURES

- 5th Gen Intel® Core™ processor
- DDR3L 1600/1333 MHz memory, 1x 204-pin SODIMM socket, up to 8GB
- Triple independent display by 2x mini DisplayPort & dual-channel LVDS
- 1x SATA III, 1x mSATA
- 1x half-size Mini PCIe

REAR I/O



NANO-6050-i5-5350U	NANO-6050 Nano-ITX board based on 5th Gen Intel® Core™ i5-5350U processor
NANO-6050-i3-5010U	NANO-6050 Nano-ITX board based on 5th Gen Intel® Core™ i3-5010U processor

PACKING LIST

- 1x NANO-6050 motherboard with passive heat spreader
- 1x driver CD

OPTIONAL ITEMS

Adaptor-60W	60W power adapter with DC-plug
-------------	--------------------------------

General

Processor	5th Generation Intel® Core™ processors in FCBGA1168 package i5-5350U, 1.8 GHz (2.9 GHz turbo), 3 MB, 15W TDP (2C/4T) i3-5010U, 2.1 GHz (no turbo), 3 MB, 15W TDP (2C/4T) Intel® Hyper-Threading Technology, Virtualization Technology (VT-x), Small Business Advantage
BIOS	AMI UEFI BIOS (SPI ROM)
Memory	DDR3L 1600/1333 MHz memory (non-ECC) 1x 204-pin SODIMM socket, up to 8 GB
Storage Devices	1x SATA III port 1x mSATA
Watchdog Timer	Programmable 1 to 255 minutes/seconds interval
Hardware Monitoring	CPU & system temperature Onboard voltages (CPU Vcore, 12V, 5V, 3.3V, RAM)

I/O Interface

Audio	Intel® High Definition Audio interface Realtek® ALC892 High Definition Audio 1x jumbo jack (Line-out/Mic-in)
Ethernet	2x Gigabit Ethernet (Intel® I218-AT) 2x RJ45 connectors with LED on rear I/O
Serial Port	1x RS-232/422/485 on pin header (selectable by BIOS, 2.0 mm pitch)
USB	2x USB 2.0 on rear I/O 4x USB 3.0 on pin header (2.0 mm pitch)
GPIO	8-bit

Display

Graphic Controller	i5-5350U SKU: Intel® HD Graphics 6000 i3-5010U SKU: Intel® HD Graphics 5500 Supports DirectX 11.1, OpenGL 4.2, OpenCL 1.3
Display Interface	2x Mini DisplayPort, resolution up to 3840 x 2160 @ 30Hz 1x dual-channel 24-bit LVDS connector, resolution up to 1920 x 1200 @ 60Hz

Mechanical & Environmental

Dimension	120.0 x 120.0 x 21.5 mm (4.7" x 4.7" x 0.8") 120.0 x 120.0 x 25.0 mm (4.7" x 4.7" x 1.0") with passive heat spreader
Power Supply	12V DC-in
Environment	Operating temperature: 0°C to 60°C Storage temperature: -20°C to 85 °C Relative humidity: 5~95%, non-condensing
MTBF	Over 100,000 hours at 40°C

