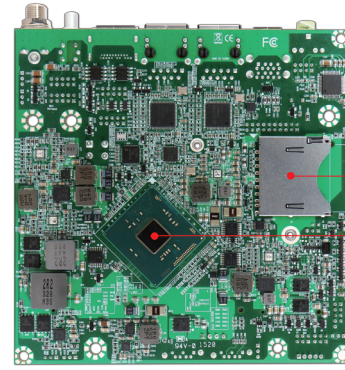
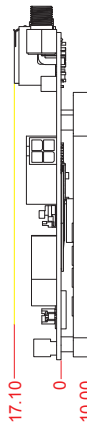
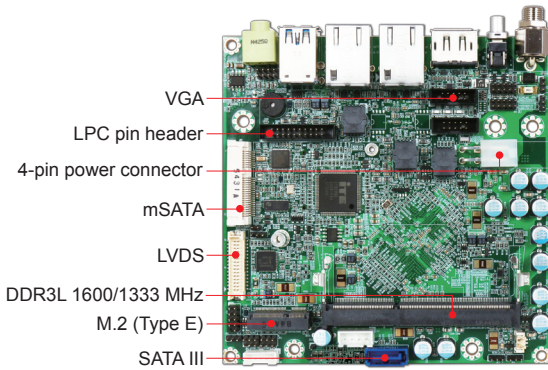


NANO-6061

Intel® Pentium® and Celeron® N3000 Product Family Based Nano-ITX Board with Triple Display, Dual GbE, USB 3.0, M.2, SATA III, and mSATA

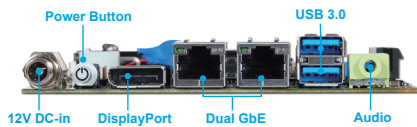


NANO-6061 is built with Intel® Pentium® and Celeron® N3000 product family. It's designed for low-power, fan-less application, it also can support 4K display via DisplayPort. The new Intel architecture integrates more powerful 3D graphics engine and memory controller making it suitable for critical environments.

FEATURES

- Intel® Pentium® and Celeron® N3000 product family with 6W TDP
- DDR3L 1600/1333 MHz memory, 1x 204-pin SODIMM socket, up to 8GB
- Triple independent display by VGA, DisplayPort, and dual-channel LVDS
- 1x SATA III, 1x mSATA, 1x SD card
- 1x M.2 socket (Type E)

REAR I/O



ORDERING GUIDE

NANO-6061-N3710	NANO-6061 with Intel® Pentium® N3710 processor
NANO-6061-N3160	NANO-6061 with Intel® Celeron® N3160 processor
NANO-6061-N3060	NANO-6061 with Intel® Celeron® N3060 processor

PACKING LIST

1x NANO-6061 motherboard with passive heat spreader
1x driver CD

OPTIONAL ITEMS

Adaptor-60W	60W power adapter with DC-plug
-------------	--------------------------------

GENERAL

Processor	Intel® Pentium® and Celeron® N3000 product family in FCBGA1170 package Pentium® N3710, 1.6 GHz (2.56 GHz turbo), 2 MB, 6W TDP (4C/4T) Celeron® N3160, 1.6 GHz (2.24 GHz turbo), 2 MB, 6W TDP (4C/4T) Celeron® N3060, 1.6 GHz (2.48 GHz turbo), 2 MB, 6W TDP (2C/2T)
BIOS	AMI uFEI BIOS (SPI ROM)
Memory	DDR3L 1600/1333 MHz memory (non-ECC) 1x 204-pin SODIMM socket, up to 8 GB
Storage Devices	1x SATA III port 1x mSATA 1x SD card socket
Watchdog Timer	Programmable 1 to 255 minutes/seconds interval
Hardware Monitoring	CPU & system temperature Onboard voltages (CPU Vcore, 12V, 5V, 3.3V, RAM)
Expansion Interface	1x M.2 socket (Type E, with PCIe x1, USB 2.0, SDIO, UART, and I ² C signal)

I/O INTERFACE

Audio	Intel® High Definition Audio interface Realtek® ALC892 High Definition Audio 1x jumbo jack (Line-out/Mic-in)
Ethernet	2x Gigabit Ethernet (Intel® I211-AT) 2x RJ45 connectors with LED on rear I/O
Serial Port	1x RS-232/422/485 (selectable by BIOS, 2.0 mm pitch)
USB	2x USB 3.0 on rear I/O 1x USB 2.0 on pin header (2.0 mm pitch)
GPIO	8-bit
Other	TPM 1.2 module (optional) on LPC pin header

Graphic Controller Integrated Intel® Generation 8 Graphics
Supports DirectX 11.1, OpenGL 4.2, OpenCL 1.2

Display Interface 1x DisplayPort, resolution up to 3840 x 2160 @ 30Hz
1x VGA on pin header (optional cable required), resolution up to 1920 x 1200 @ 60Hz
1x dual-channel 24-bit LVDS connector, resolution up to 1920 x 1200 @ 60Hz

Mechanical & Environment

Dimension	120.0 x 120.0 x 21.0 mm (4.7" x 4.7" x 0.8") 120.0 x 120.0 x 25.0 mm (4.7" x 4.7" x 1.0") with passive heat spreader
Power Supply	12V DC-in
Environment	Operating temperature: 0°C to 55°C Storage temperature: -20°C to 85°C Relative humidity: 5~95%, non-condensing
MTBF	Over 100,000 hours at 40°C

