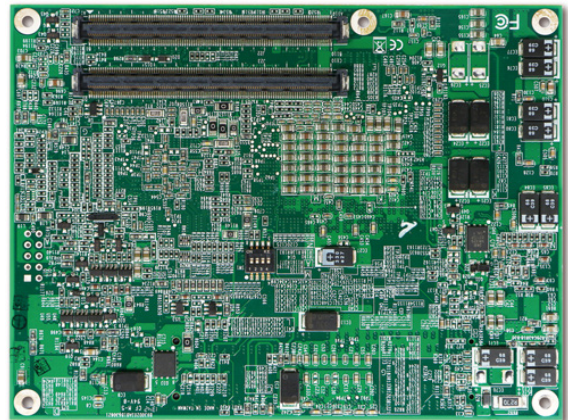
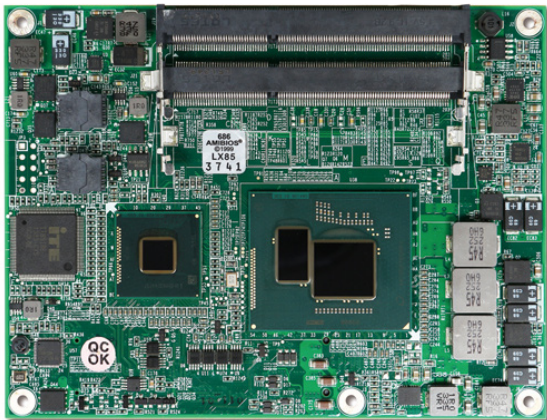


PCOM-B635VG

Intel® 5th Generation Core™ i7/i5/i3 processor based Type VI Basic-COM Express 2.0 module with ECC DDR3L, VGA, Display port, Gigabit Ethernet, SATA and USB



The basic PCOM-B635VG COM Express module supports up to 16GB ECC DDR3L 133/1600 MT/s SDRAM on two 204-pin SO-DIMM sockets making it faster than its predecessor. Its expansion interface supports one PCI Express x16 Gen3 (8.0GT/s) with three controllers integrated into processor for enhanced video performance and enhance capabilities to be configurable to 2 x8-lane or 1 x8-lane and 2 x4-lane PCI Express ports.

The module supports three independent displays, DP (Display Port), HDMI or DVI and VGA with up to double greater 3D performance compared to its previous generation.

FEATURES

- Intel 5th Gen. Core i7, i5 and i3 Processors
- Support DDR3L-1600/1333 ECC SDRAM on two SO-DIMM slots, up to 16GB
- One VGA, three Display-port and one embedded Display port.
- Support USB 2.0/3.0, SATA, 7 x PCIE x1 and 1 x PCIE x16
- Wide voltage support, from 6V to 18V

ORDERING GUIDE

AB1-3C53	PCOM-B635VG TYPE VI. Basic Form Factor COM Express Module. Broadwell/ PCH
----------	---

American Portwell
(Fremont, California)

Tel: +1-510-403-3399
Fax: +1-510-403-3184
E-mail: info@portwell.com
<http://www.portwell.com>

GENERAL

Form Factor	- Type 6, Basic Form Factor COM Express
Processor	- Intel® 5th Gen. Core™ i7/i5/i3 processor 6MB Cache - SMT-4-8 threads/core - Turbo Mdoe
Chipset	- SoC
Memory	- DDR3L 1600/1333 ECC SDRAM, up to 16GB - Two SO-DIMM slots
BIOS	- AMI Aptio
Ethernet	- Intel® Ethernet Controller I217LM
PCI Express	- 7 x PCI Express Gen2 x1, 1 x PCI Express Gen3 x16
Expansion Interface	- SPI, SMBUS, GPIO, I2C, UART, TPM, I2C interface supported
SATA	- 4 x SATA 6.0Gb/s
USB Port	- 8 x USB 2.0, 4 x USB 3.0
Watchdog Timer	- Programmable via S/W from 1 sec to 255 min
Hardware Monitoring	- ITE 8528 ; CPU, Voltage , Temperature
Connector	- COM Express Connector x2
Audio	- Intel® High Definition Audio (2x channels delivering 192-KHz 32-bits, and 8x channels delivering 96-KHz 32-Bits)
Board Size	- 125x95mm
Environment	- Operation Temperature: 0° C ~ +60° C (-40° F~+185° F) - Relative Humidity: 5~95%

DISPLAY

Display	- Support VGA, DP/HDMI, 2 x LVDS/eDP
---------	--------------------------------------

