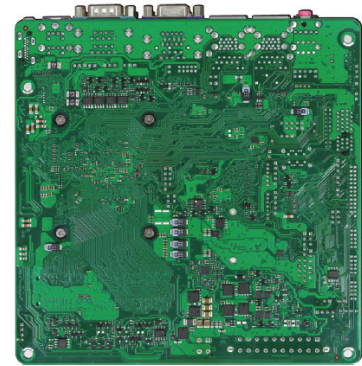
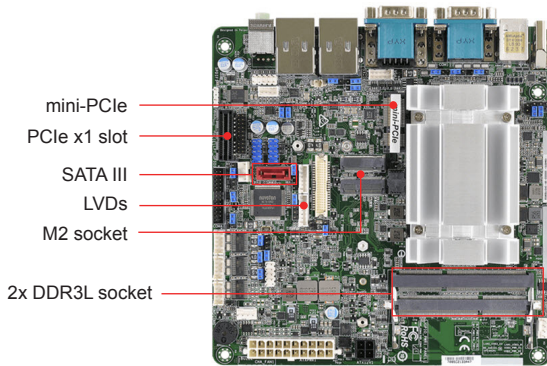


# WADE-8172

Intel® Celeron® Processor N3350 Based Mini-ITX Board with VGA, HDMI, LVDS, Dual GbE, USB 3.0, SATA III, Mini PCIe, M.2

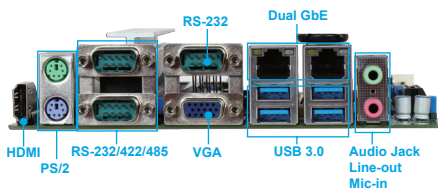


WADE-8172 is based on Intel® Celeron® processor N3350. With dual-channel DDR3L memory and rich I/O sets, WADE-8172 empowers energy-efficient solutions for point-of-sale (POS) and industrial automation applications.

## FEATURES

- Intel® Apollo Lake SoC Processor
- Supports Dual Channel DDR3L 1333/1600MHz, 2 x SO-DIMM, up to 8GB system memory
- 1 x HDMI, 1 x D-Sub, 1 x Dual Channel 24-bit LVDS
- 4 x USB 3.0, 4 x USB 2.0, 1 x SATA3 port
- Supports 1x mini-PCIe, 2x M.2 socket(KEY M & KEY E)

## REAR I/O



## ORDERING GUIDE

AB1-3F78	(R).WADE-8172-N3350 Mini-ITX ESB.Intel® Apollo lake SoC Processor N3350 w/DDR3L/VGA/LVDS/HDMI/dual GbE LAN/SATA
----------	--

## PACKING LIST

One Driver CD
One SATA cable
One I/O shield
One WADE-8172 motherboard

## GENERAL

Processor	Intel® Celeron® processor N3350 in FCBGA1296 package, 1.1 GHz (2.4 GHz turbo), 2 MB L2, 6W TDP
Chipset	N/A
BIOS	AMI UEFI BIOS
Memory	Support up to 8 GB DDR3L 1600/1333 MHz memory (non-ECC) on 2x 204-pin SODIMM socket
Storage Devices	- 1x SATA III ports - 1x M.2 socket (KEY M 2260/2280) with SATA signal for SSD
Watchdog Timer	Programmable watchdog timer, time out period from 1 sec to 255 secs.
Hardware Monitoring	- Temperature (CPU & System) - Voltages (CPU Vcore, 12V, 5V, 3.3V, RAM)
Expansion Interface	- 1x PCIe x1 slot (Gen2, 5GT/s) - 1x M.2 socket (KEY E 2230) with PCIe x1 and USB(shared) for Wireless - 1x full/half size Mini PCIe socket with PCIe x1 and USB(shared)

## I/O INTERFACE

Super I/O	N/A
Audio	- Intel® High DefinitionAudio interface Realtek® ALC887 High DefinitionAudio - 1x jumbo jack support Line-out/Mic-in
Ethernet	2x RJ45 connectors on rear I/O (Realtek® RTL8111G)
Serial port	- 2x RS-232/422/485 on rear I/O (selectable by BIOS) - 1x RS-232 on rear I/O - 3x RS-232 on pin header (2.00 mm pitch)
USB	- 4x USB 3.0 on rear I/O - 4x USB 2.0 on pin header (2.54mm pitch)
GPIO	8 bit GPI/GPO

## DISPLAY

Graphic Controller	Integrated Intel® Generation 9 Graphics Supports DirectX 12, OpenGL 4.2, OpenCL 2.0
Display Interface	- LVDS: dual channel 24bit LVDS on board connector, up to 1920x1200 - HDMI: resolution up to 3840x2160 - VGA: resolution up to 1920 x 1200 , on rear I/O

## Mechanical & Environment

Dimension	170.0 x 170.0 mm (6.7" x 6.7")
Power Supply	12V & 19~24V DC input or ATX power input
Environment	- Operating temperature: 0°C to 60°C - Storage temperature: -20°C to 80°C - Relative humidity: 5~95%, non-condensing
MTBF	Over 100,000 hours at 40°C

